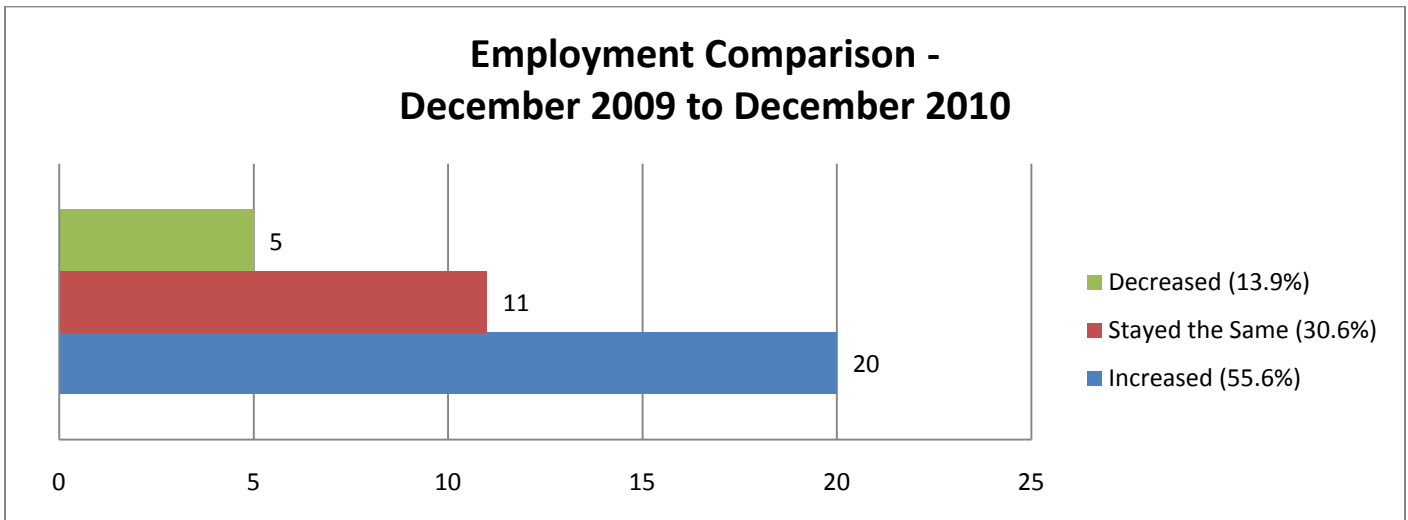
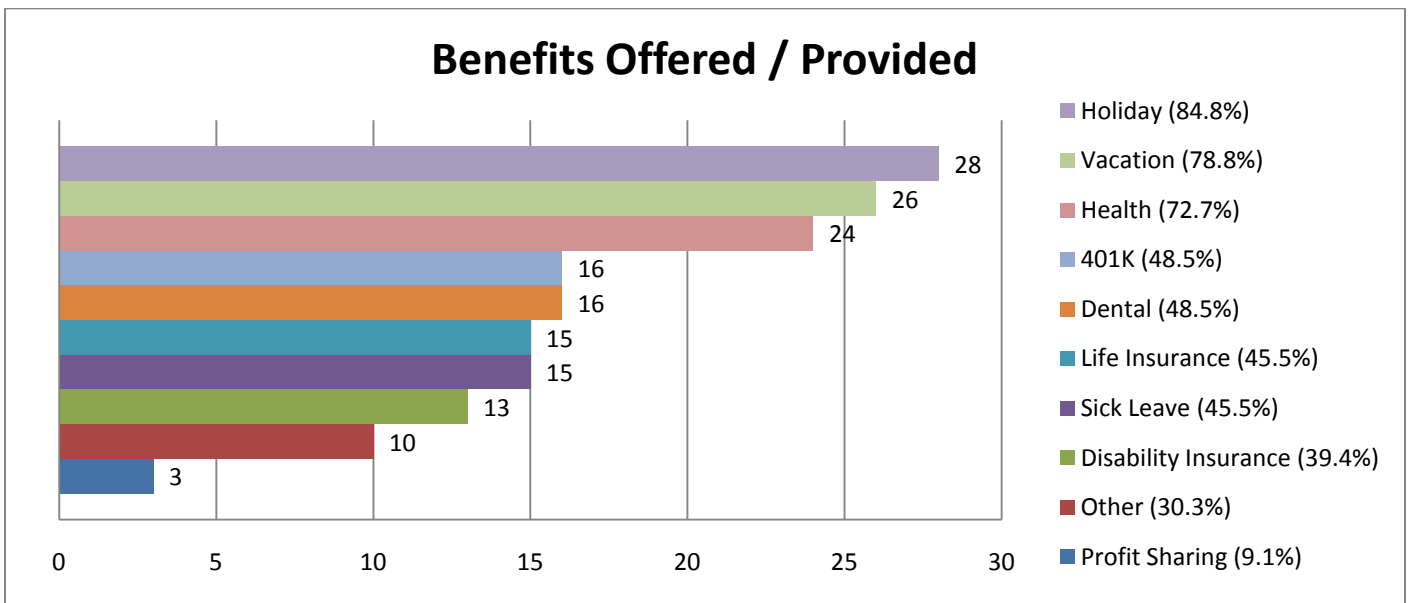
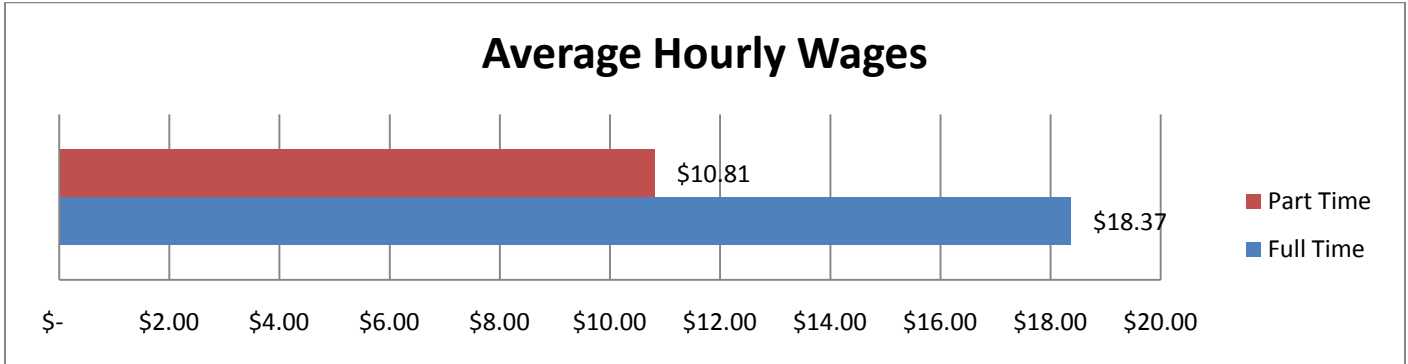


Employment Data Survey Summary

Total # of Surveys Returned	36
# of Full Time Employees	1,015
# of Part Time Employees	79

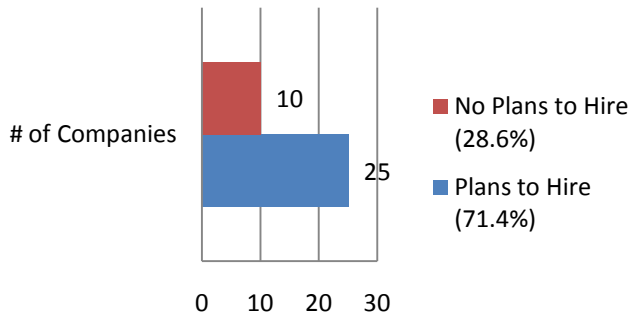


Employees Hired in 2010 Employees Laid Off/Terminated in 2010

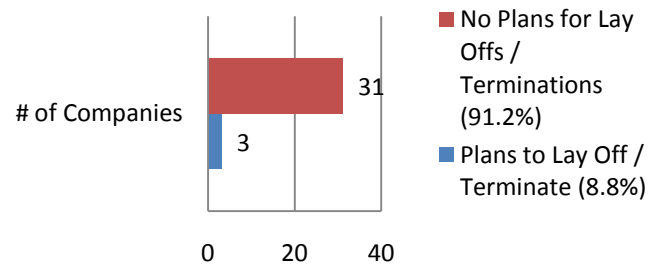
34

34

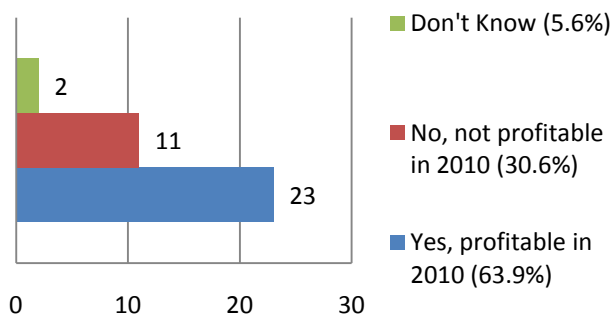
2011 Plans to Hire



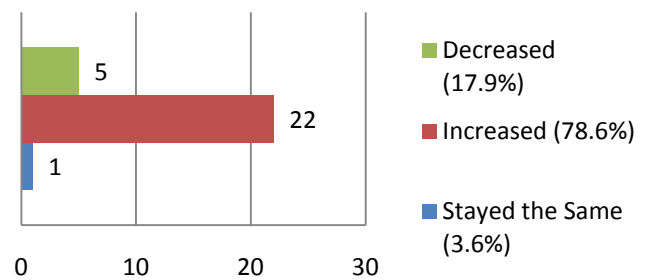
2011 Plans to Lay Off / Terminate



Profitability 2010



Profitability Increase / Decrease 2009 to 2010



Other Comments:

- All of the numbers for employment & wages are rough approximations. Exact figures will be provided in the yearly reporting manner as usual. We are cautiously optimistic for 2011 & beyond.
- We saw an increase in business during the last quarter of 2010 and hired all new employees in late August / early September. We are currently working with our accountant to confirm year end totals and do not want to speculate. But I can share we had our busiest January ever since opening. With the highest dollar amount shipped.
- We will be profitable in 2011.
- We started recovering in 2010 from the 2009 meltdown.
- Although not profitable in 2010 our loss in 2009 was over \$240K. Our loss in 2010 was \$22K. Business conditions are improving.
- We are ready to begin production and open an assembly shop. Sales are improving.
- Construction outlook looks good for 2011
- We expect 2011 to be our most profitable year to date.
- We are a new start-up business just completing our first year.
- We are still impacted by the downturn in the construction industry. We are optimistic about some recovery for 2011, and then moving more positively thereafter.